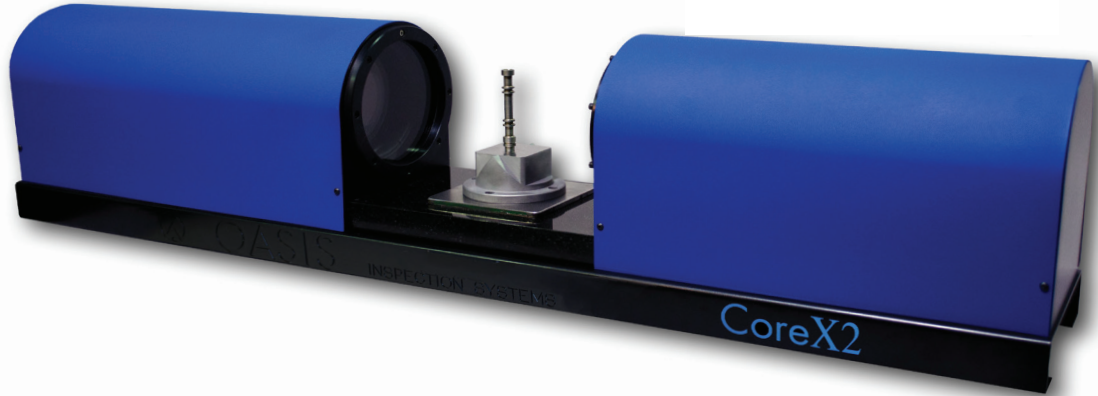




OASIS CoreX2



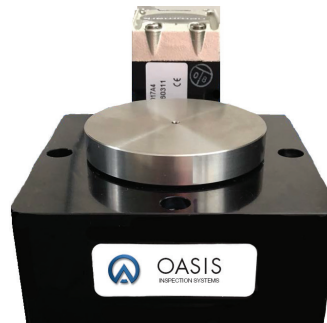
Speed, Accurate, Easy. Measure On.

The **CoreX2** is an optical profile inspection system that combines accuracy and precision with a fast, easy to use operator interface. This inspection system features the most advanced reliable software in the industry which captures a part in a digital format and converts the captured image into real dimensional data.

The **CoreX2** allows users to instantly measure all the dimensions on a part with an accuracy of up to +/- 0.0002 inches! Speeding up your inspection process will result in an immediate impact on your bottom line. Coupled with speed, accuracy and ease, the **CoreX2** will quickly become the most valued addition to your Quality Control Department!

Features:

- Accurate to +/- 0.0002 Inches
- Instant Measurements
- Simplifies Complex Measurements
- User Friendly Full-Feature Software
- Data Exportable to SPC Software
- Quick Return on Investment
- Automatic Inspection Reporting
- OASIS-Link File Linking
- Field of View: 3.25" x 2.60"



Now Available:

Motorized Rotary Stage

Name	Meas'd	LSL	Status	USL
DIA01	0.7126	0.7070	↑	0.7170
DIA02	0.5509	0.5450	↑	0.5550
DIST01	0.4019	0.3950	↑	0.4050
CONCENT	0.0003	0.0000	↑	0.0010

MAX-MIN	Range	Min	Status	Max
DIA01	0.0018	0.7117	↑	0.7135
DIA02	0.0009	0.5505	↑	0.5514
DIST01	0.0013	0.4013	↑	0.4026
CONCENT	0.0008	0.0000	↑	0.0008

IN THE BOX:

- **CoreX2** - 46" wide x 9" deep x 12" high (78 lbs)
- Computer, Monitor, Keyboard & Mouse
- Quick Start Guide

Other Available Accessories:

- Premium Tools Package (including thread measurement)
- Manual Rotary Stage

User Friendly Full-Feature Software:

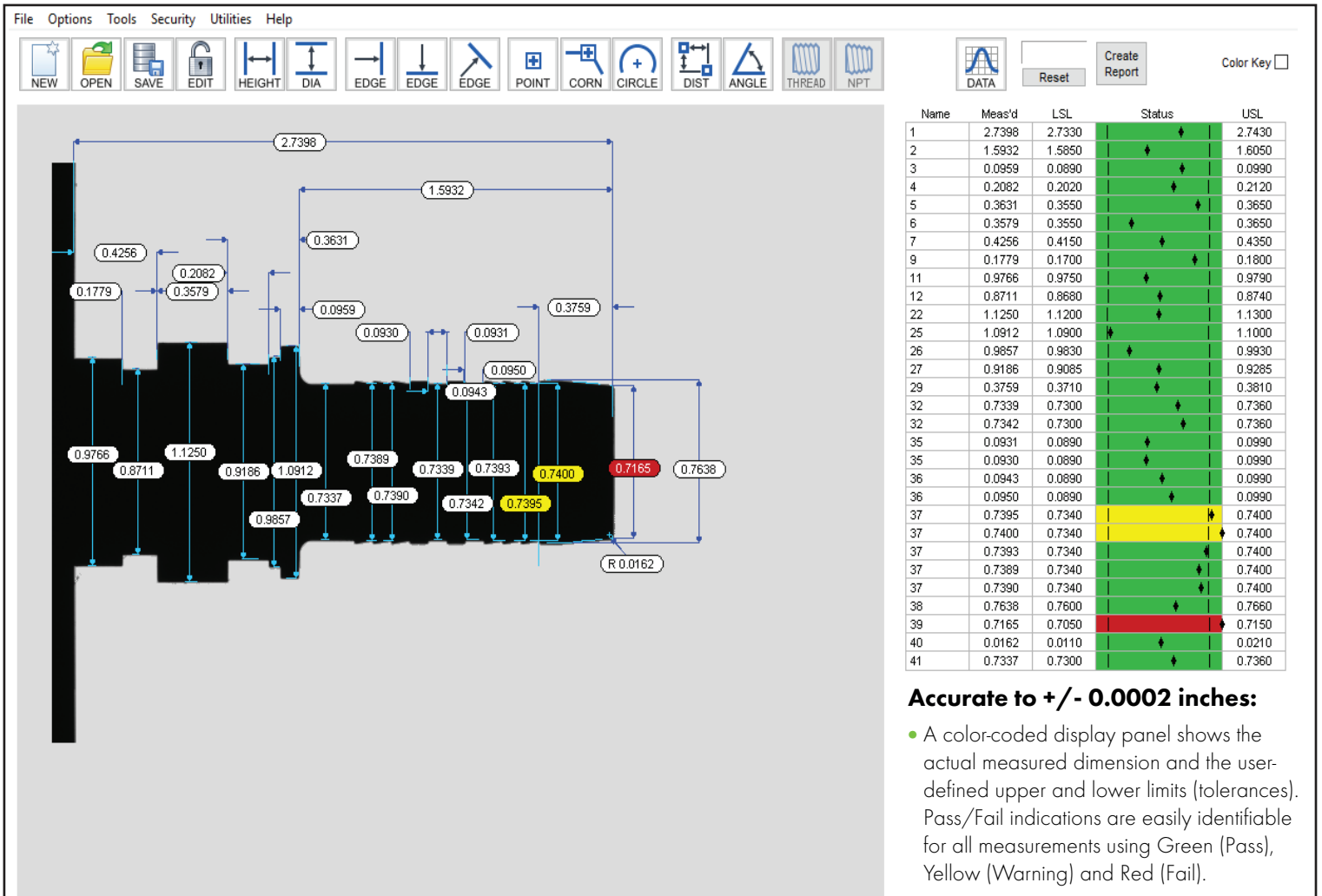
- The CoreX2 has an easy to use operator interface which allows users to create part programs in just minutes.

Return on Investment:

- Faster inspection means less cost per inspected part. By inspecting more parts, you can stop rejects before they even happen.

Automatic Inspection Reporting:

- Measurements taken by the CoreX2 are recorded as parts are inspected. Those dimensions are imported into an Inspection Report which creates a custom report that can be printed or saved for future retrieval. The report can be created for the dimensions of a single inspected part or for a group of parts in an entire inspection run. Dimensions can also be easily exported to SPC Software in real-time.



Accurate to +/- 0.0002 inches:

- A color-coded display panel shows the actual measured dimension and the user-defined upper and lower limits (tolerances). Pass/Fail indications are easily identifiable for all measurements using Green (Pass), Yellow (Warning) and Red (Fail).

Instant Measurements:

- By capturing the image in a digital format, the software converts the image into real-time dimensional data. Every time a part is placed in the inspection zone, all dimensions are instantly measured and displayed.

OASIS-Link File Linking:

- To measure parts larger than the field of view, the CoreX2 combines multiple part programs in automatic sequence and has them reported and linked together.



**Speed, Accurate, Easy,
Measure On.**

OASIS Inspection Systems

110 Sleepy Hollow Drive

Middletown, DE 19709

(302) 449-0199 PHONE

(302) 449-0288 FAX

www.oasisinspectionsystems.com